

Our Story, Our World



Unit 1

Land and Community

Unit: 1

Lesson: 1

Reading a map



Essential Question:

What are the different types of maps?

Objectives:

I can read a physical map and a political map.

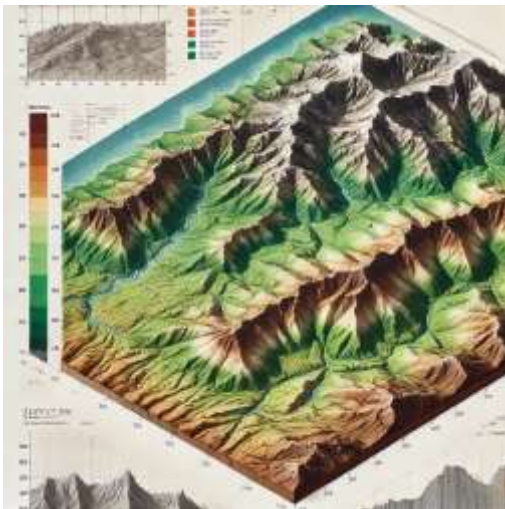
Theme Vocabulary



Political map



Physical map



Elevation



Map scale

Maps

- Maps help us understand and compare different places by showing natural features and human-made structures.
- Maps show political borders and the distances between locations.
- Maps also show changes people make to the land, like building bridges and tunnels.
- Maps provide information about population sizes.



Types of Maps

- Maps show places from your neighborhood to the whole world.
- They can show mountains and lakes, borders of countries, and how many people live in an area.
- Maps have tools: a title tells you what the map is about, a compass shows directions, and a key explains symbols and colors.
- A scale helps you see how far places are from each other.



Political Maps

- A political map shows the borders between cities, states, or countries.
- Political maps help you find one place in relation to another.

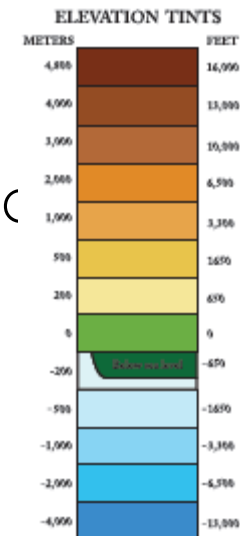


Which countries share a southern border with the Kingdom of Saudi Arabia?

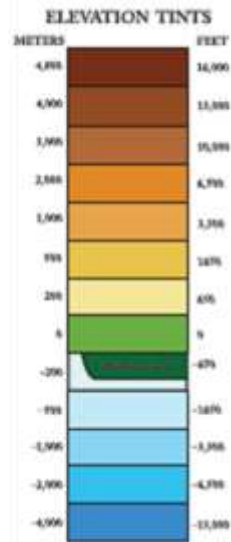
Yemen; Oman

Physical Maps

- A physical map shows the land and water.
- It uses colors to show the height of the land, known as elevation.
- Sea level, where the water meets the land, is zero feet high.
- The map key explains what each color means.



- Look at the key for the map. What color represents water to tell how deep it is? **Blue**



- How is the elevation in Dubai, United Arab Emirates, different from the elevation in Muscat, Oman? How do you know?

Dubai has a lower elevation than Muscat. Dubai is on a green part of the map, which means it has a low elevation. Muscat is on an orange part of the map, which means it has a higher elevation.



Mission Links: Find Evidence

Locate your country on a physical map and political map.

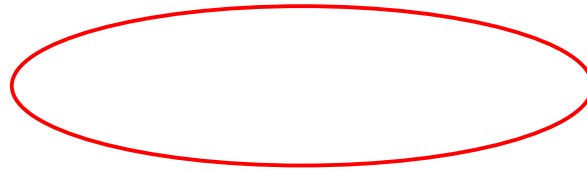
With a classmate, discuss how the two maps are similar and how they are different.



Checkpoint

- What kind of map shows the borders between nations?

a physical map



a

political map

- Which kind of map shows the location of a mountain range?

a physical map

a

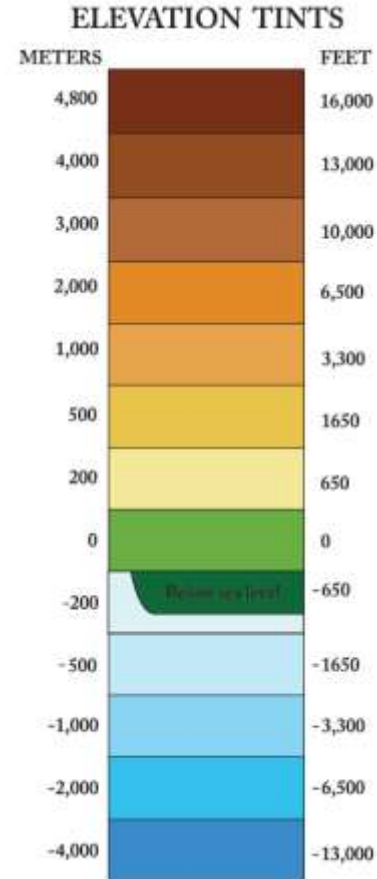
political map

Checkpoint

Look at the pictures.

What color from the elevation map would you use on a physical map of Telluride? What color would you use for Key West? Explain your answers.

Telluride: orange or brown; Key West: green or blue. Telluride has tall mountains, so the map would show a higher elevation. The land of Key West is on the ocean, so the map





Unlock the Mission Links

What special place in your country would you like a visitor to see? Make a simple map for your presentation to show a visitor where the place is located.



Skills Practice: Understanding Map Scale

- A map scale represents distance, typically shown as a line a few centimeters long.
- One centimeter on the scale might equal 10 or 20 kilometers in the real world.
- Each map has a different scale, which provides this information.

1. If the distance for 10 miles equals 16 kilometers, how many kilometers is the distance for 5 miles?

8 kilometers



2. Find the city of Di Setmo and Hadibu. In kilometers, approximately how far apart are they?

8–9 kilometers apart

3. Is Hadibu closer to Bidholeh or Riy Di Irisseyl?

Bidholeh